



APPALACHIAN REGIONAL COMMISSION

The Greater Cumberland Committee

September 3, 2020

Appalachian Regional Commission



ARC VISION STATEMENT

Appalachia is a region of great opportunity that will achieve socioeconomic parity with the nation

ARC MISSION STATEMENT

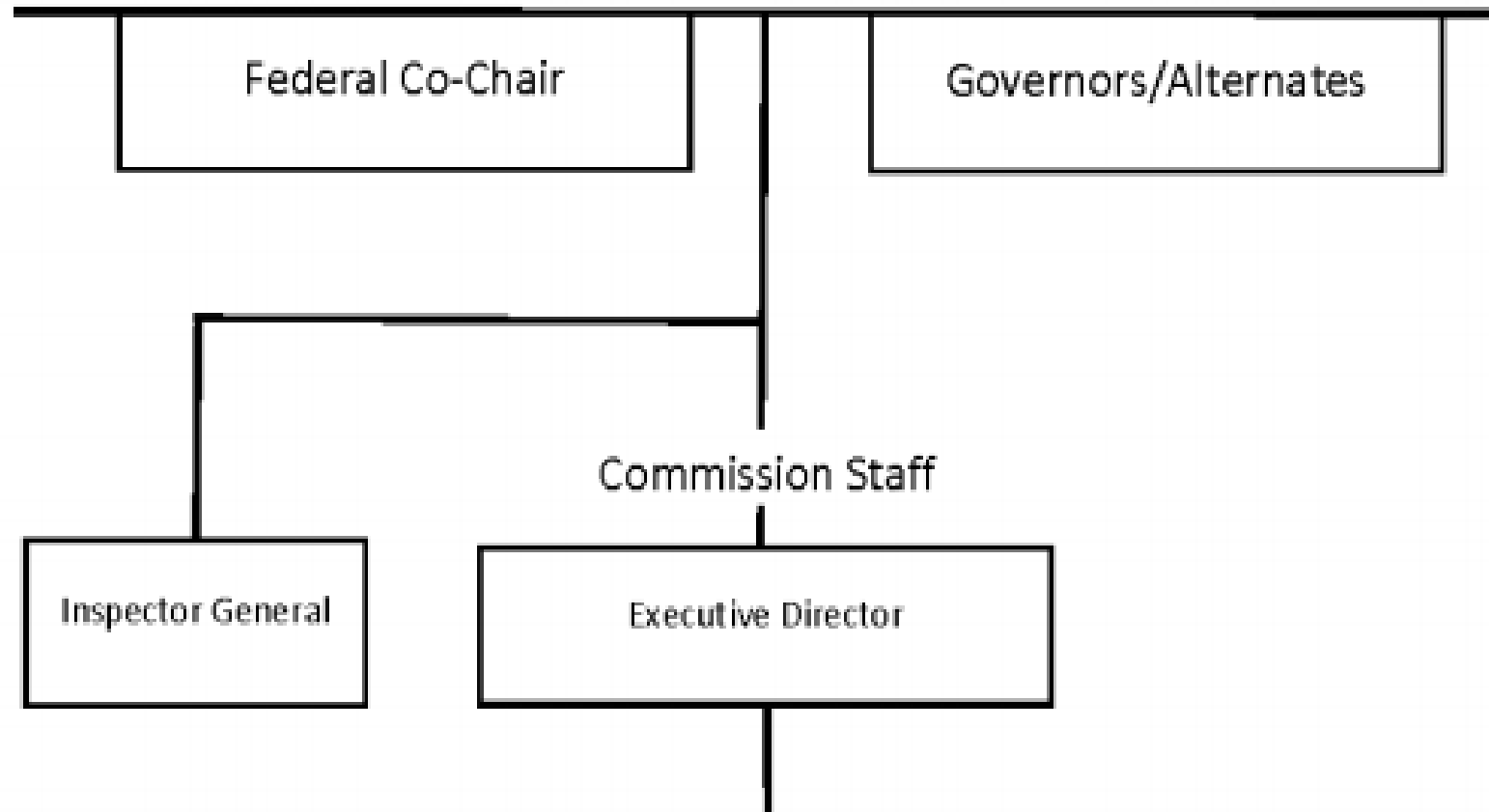
To innovate, partner and invest to build community capacity and strengthen economic growth in Appalachia

Appalachian Region



- 13 states
- 420 counties
- 205,000 square miles
- 25 million people
- 73 local development districts

Federal-State Partnership



ARC's Maryland Partners

Wendi Peters – Special Secretary for Smart Growth



David Cotton – Maryland Department of Planning



**Tri-County Council for Western Maryland
Leanne Mazer, Executive Director**



What does ARC do?



CREATE ECONOMIC OPPORTUNITIES



DEVELOP A READY WORKFORCE



BUILD CRITICAL INFRASTRUCTURE



CULTIVATE NATURAL AND CULTURAL ASSETS



FOSTER LEADERSHIP AND COMMUNITY CAPACITY

ARC Strategic Goals



ECONOMIC OPPORTUNITIES: Invest in entrepreneurial and business development strategies that strengthen Appalachia's economy.



READY WORKFORCE: Increase the education, knowledge, skills, and health of residents to work and succeed in Appalachia.



CRITICAL INFRASTRUCTURE: Invest in critical infrastructure—especially broadband; transportation, including the Appalachian Development Highway System; and water/wastewater systems.

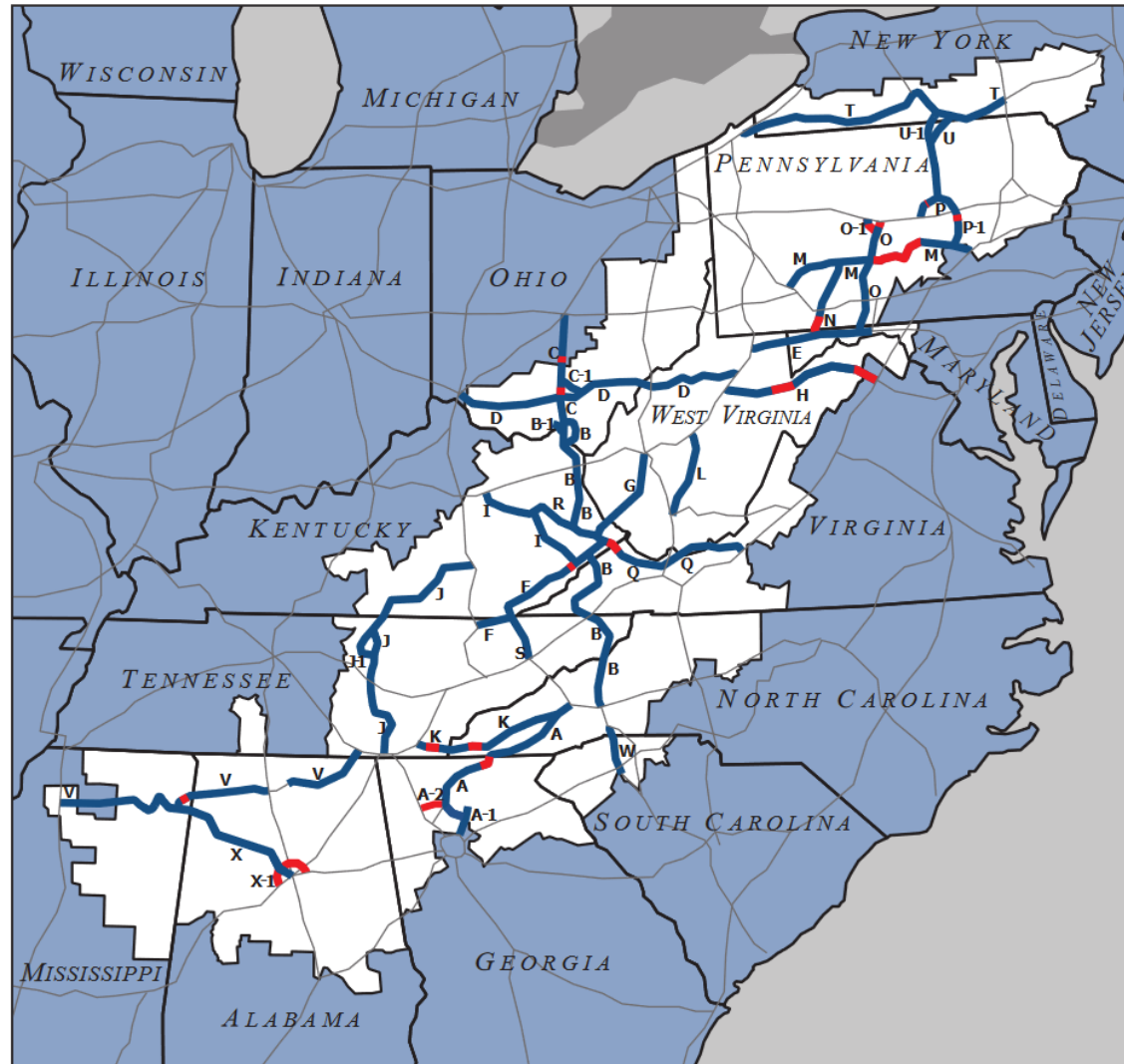


NATURAL AND CULTURAL ASSETS: Strengthen Appalachia's community and economic development potential by leveraging the Region's natural and cultural heritage assets.



LEADERSHIP AND COMMUNITY CAPACITY: Build the capacity and skills of current and next-generation leaders and organizations to innovate, collaborate, and advance community and economic development.

Appalachian Development Highway System



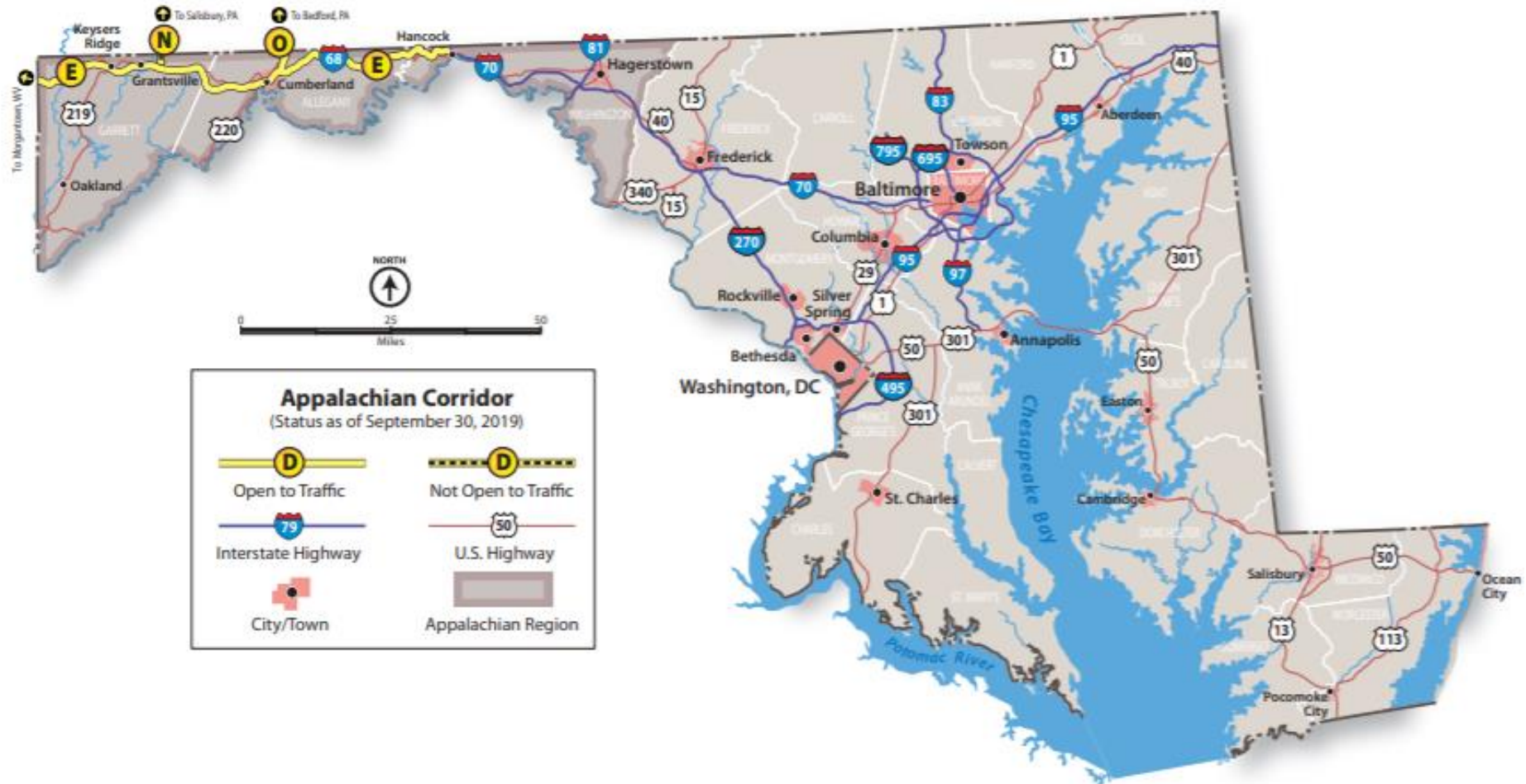
- ADHS Miles Open to Traffic
- ADHS Miles Not Open to Traffic
- Interstate Highway System

As of September 30, 2019

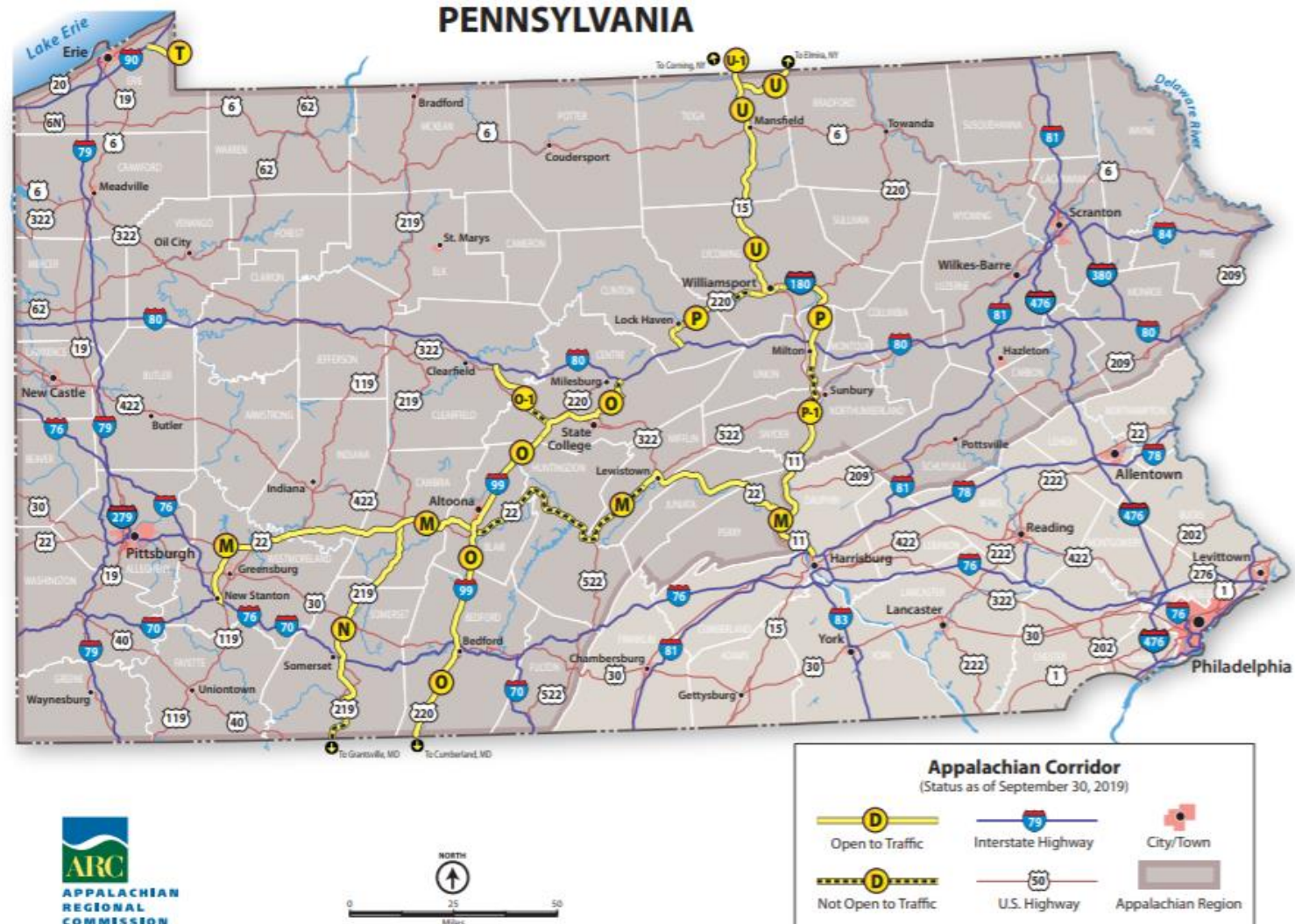


Appalachian Development Highway System

MARYLAND



Appalachian Development Highway System

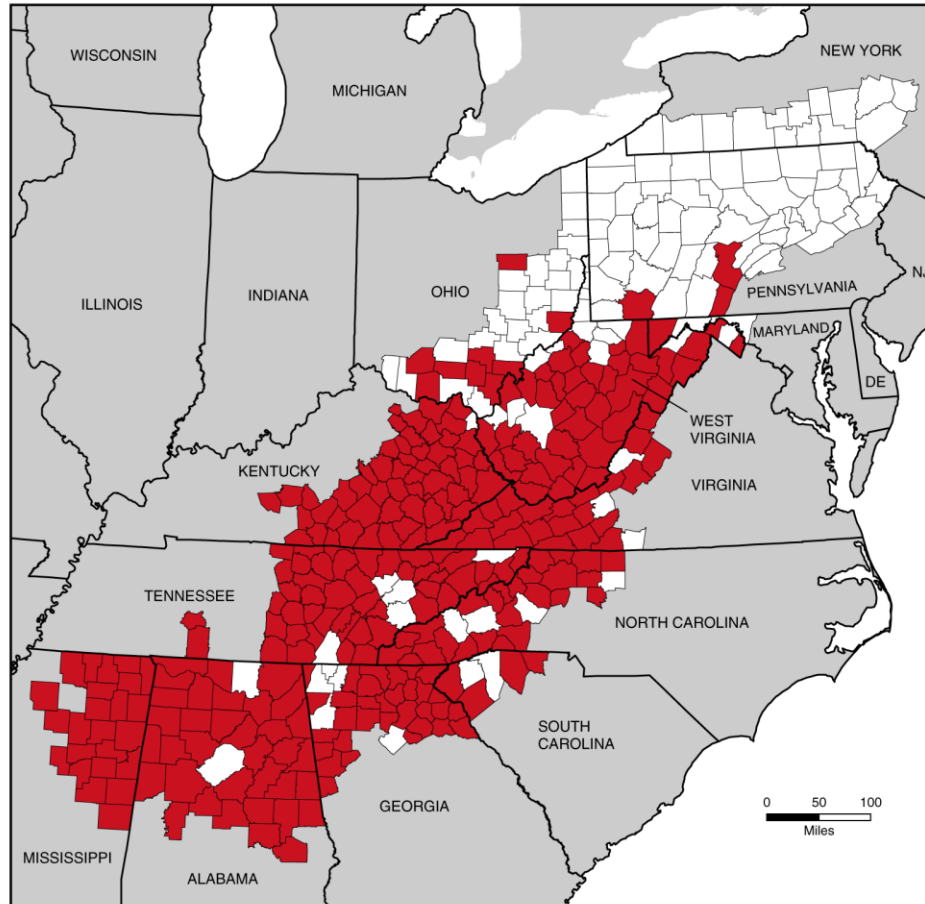


High-Poverty Counties in the Appalachian Region

(Counties with Poverty Rates At Least 1.5 Times the U.S. Average)

1960

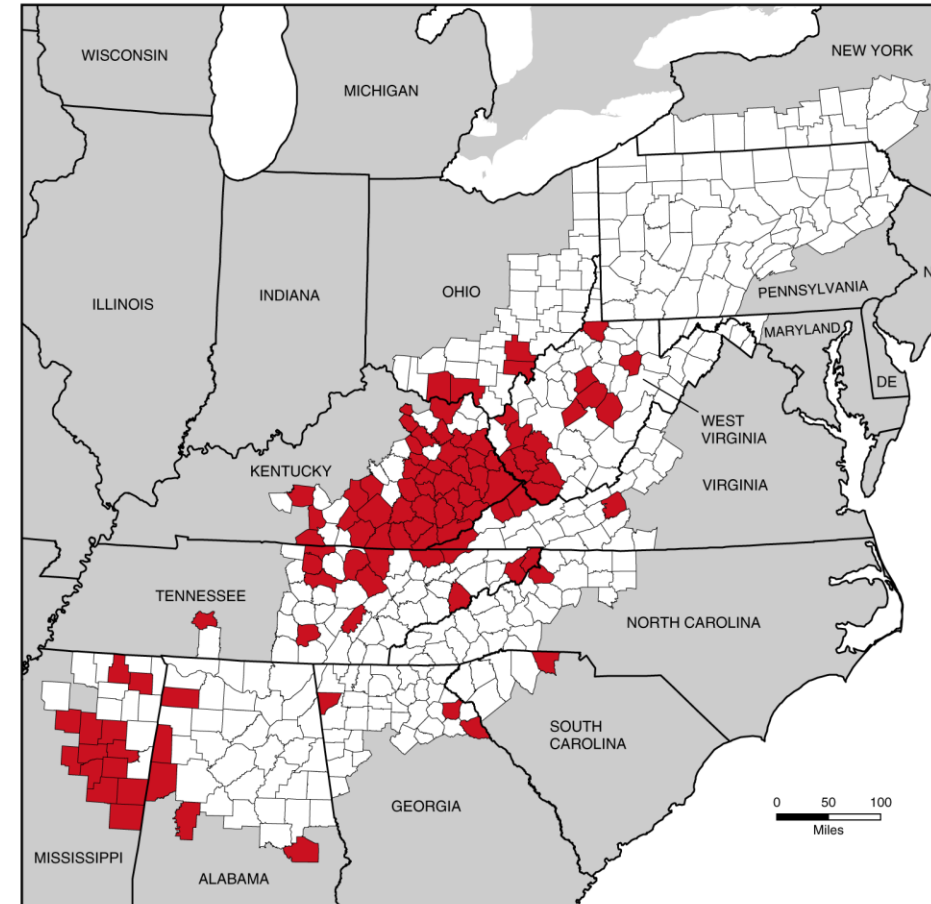
295 High-Poverty Counties



Data Source: U.S. Census Bureau, 1960 Census

2013–2017

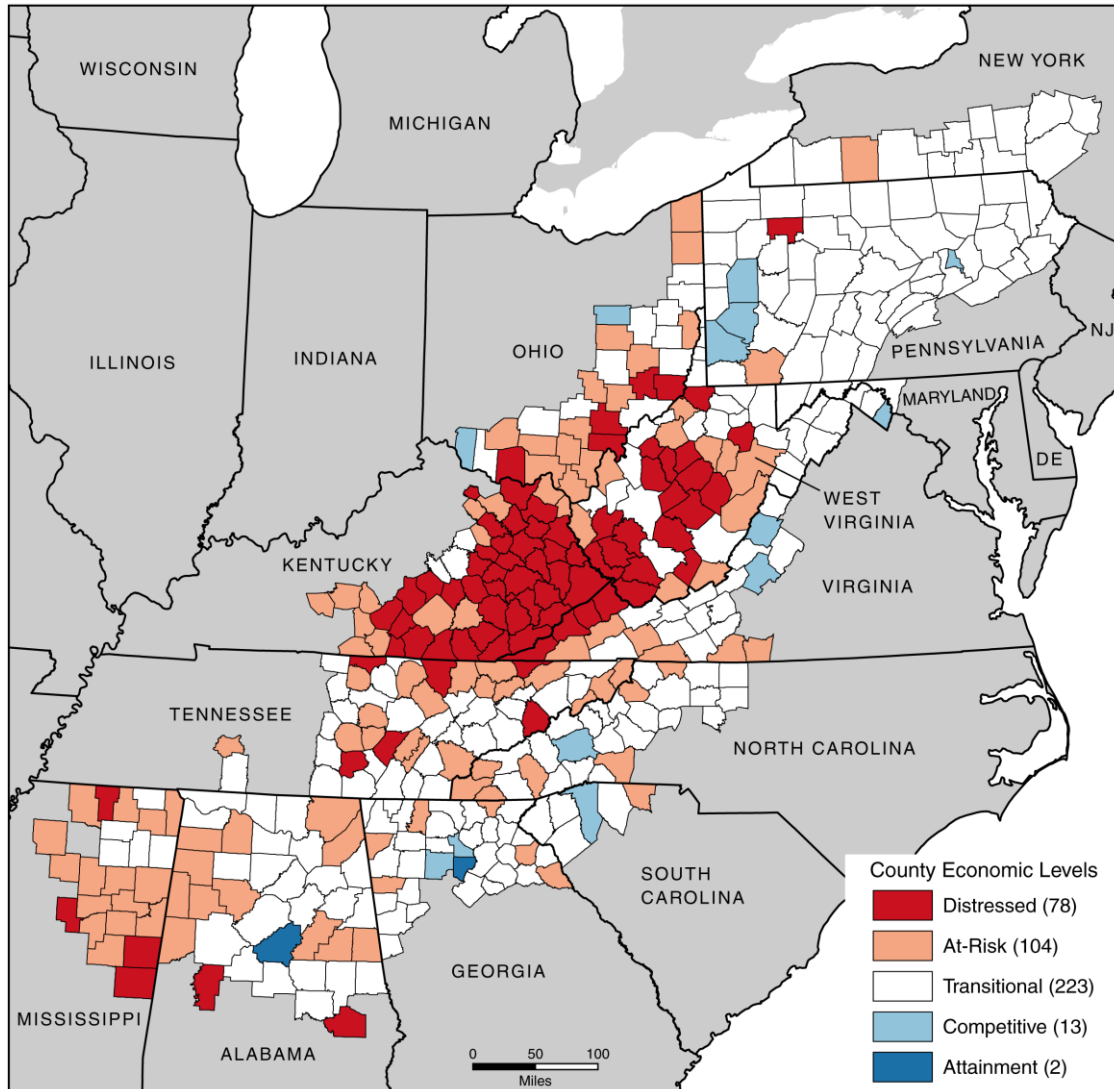
98 High-Poverty Counties



Data Source: U.S. Census Bureau, American Community Survey, 5-Year Estimates, 2013–2017



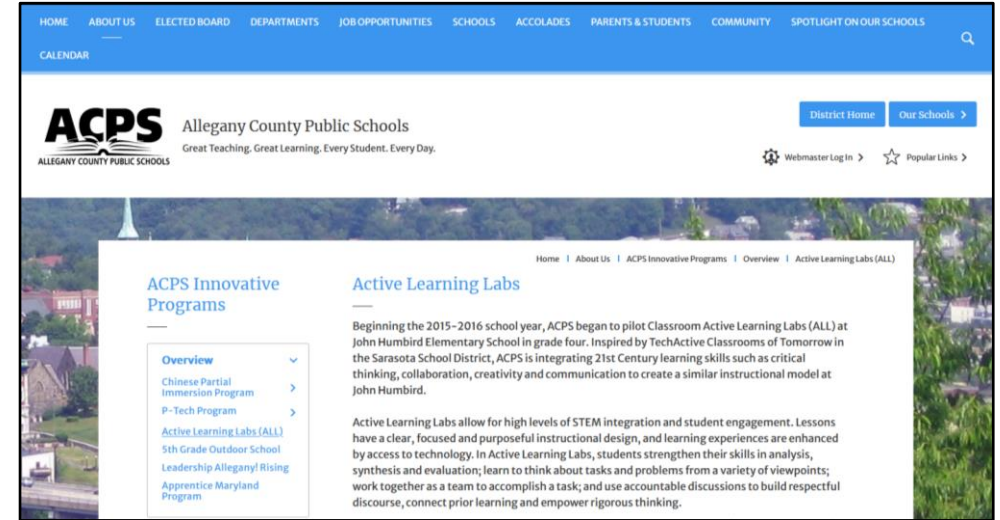
County Economic Status, FY 2021



ARC's five county economic status designations are based on three indicators: three-year average unemployment rates, per capita market income, and poverty rates.

- **Distressed:** The most economically depressed counties, ranking in the worst 10% of the nation's counties. In FY 2020, 80 Appalachian counties are designated as distressed.
- **At-risk:** Counties at risk of becoming distressed.
- **Transitional:** Counties transitioning between at-risk and competitive status.
- **Competitive:** Counties that are able to compete in the national economy but don't rank in the highest 10% of the nation's counties.
- **Attainment:** The economically strongest counties, ranking in the best 10% of the nation's counties.

Selected Recent Maryland ARC Projects



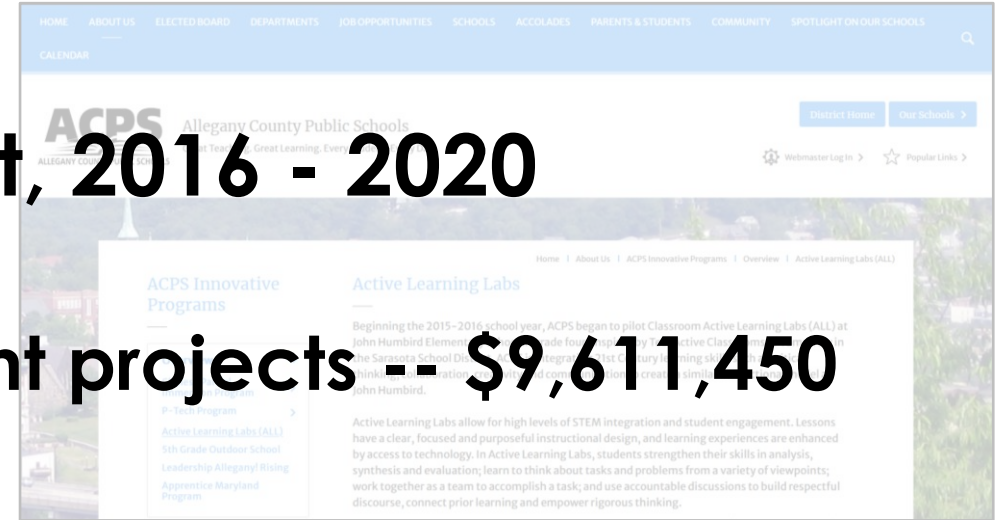
Baltimore Street Access Project to take 18 months



Selected Recent Maryland ARC Projects



Total ARC investment, 2016 - 2020



General economic development projects -- \$9,611,450



Access road projects -- \$19,815,520



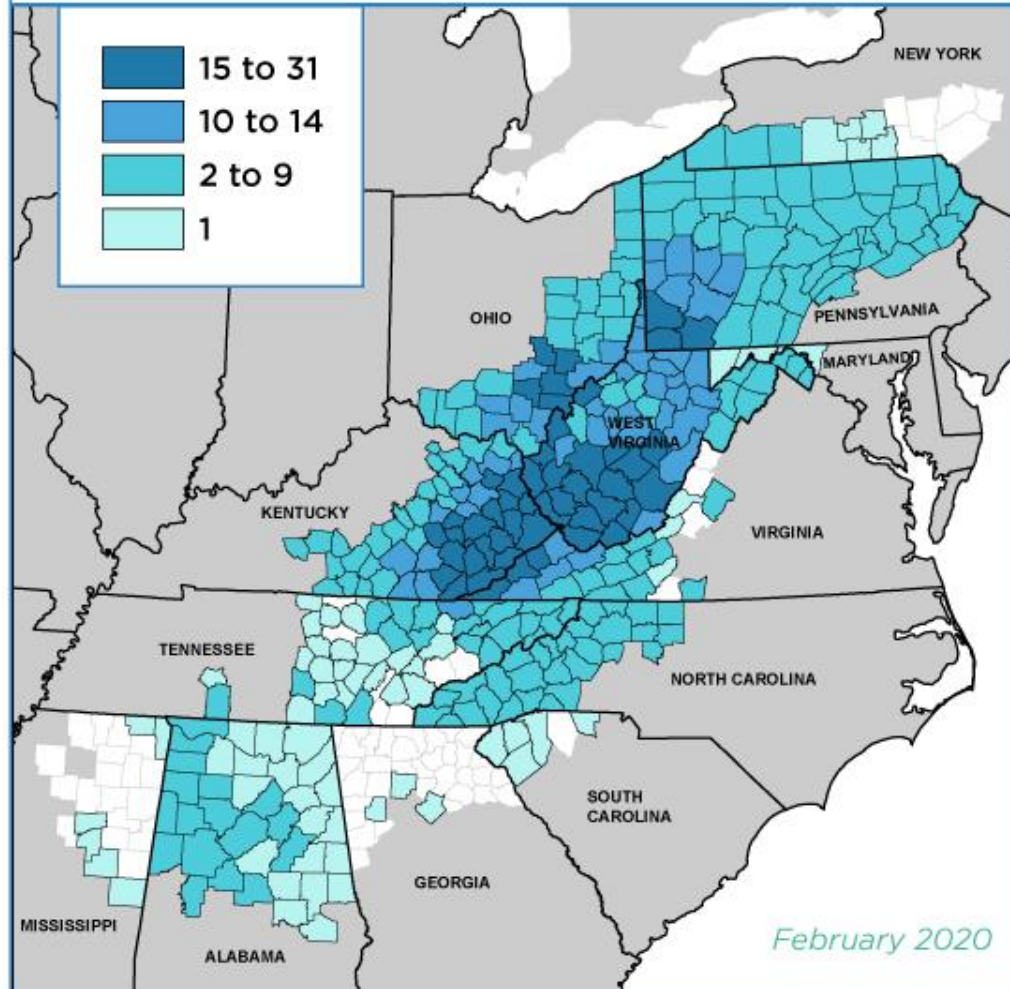
Special Activities and Programs

- **POWER (coal-impacted communities)**
- **Appalachian Leadership Institute**
- **Substance Use Disorder (SUD)**
- **DOE/NETL High-Tech Welding Program**



POWER TO DATE

ARC POWER INITIATIVE PROJECTS PER COUNTY
CUMULATIVE THROUGH FEBRUARY 2020



\$195M+
INVESTED IN

242
PROJECTS TOUCHING

350
COAL-IMPACTED
COMMUNITIES.

THESE INVESTMENTS
ARE PROJECTED TO
CREATE/RETAIN

23K+
JOBS

AND LEVERAGE

900M+
IN PRIVATE INVESTMENT
INTO APPALACHIA'S
ECONOMY.

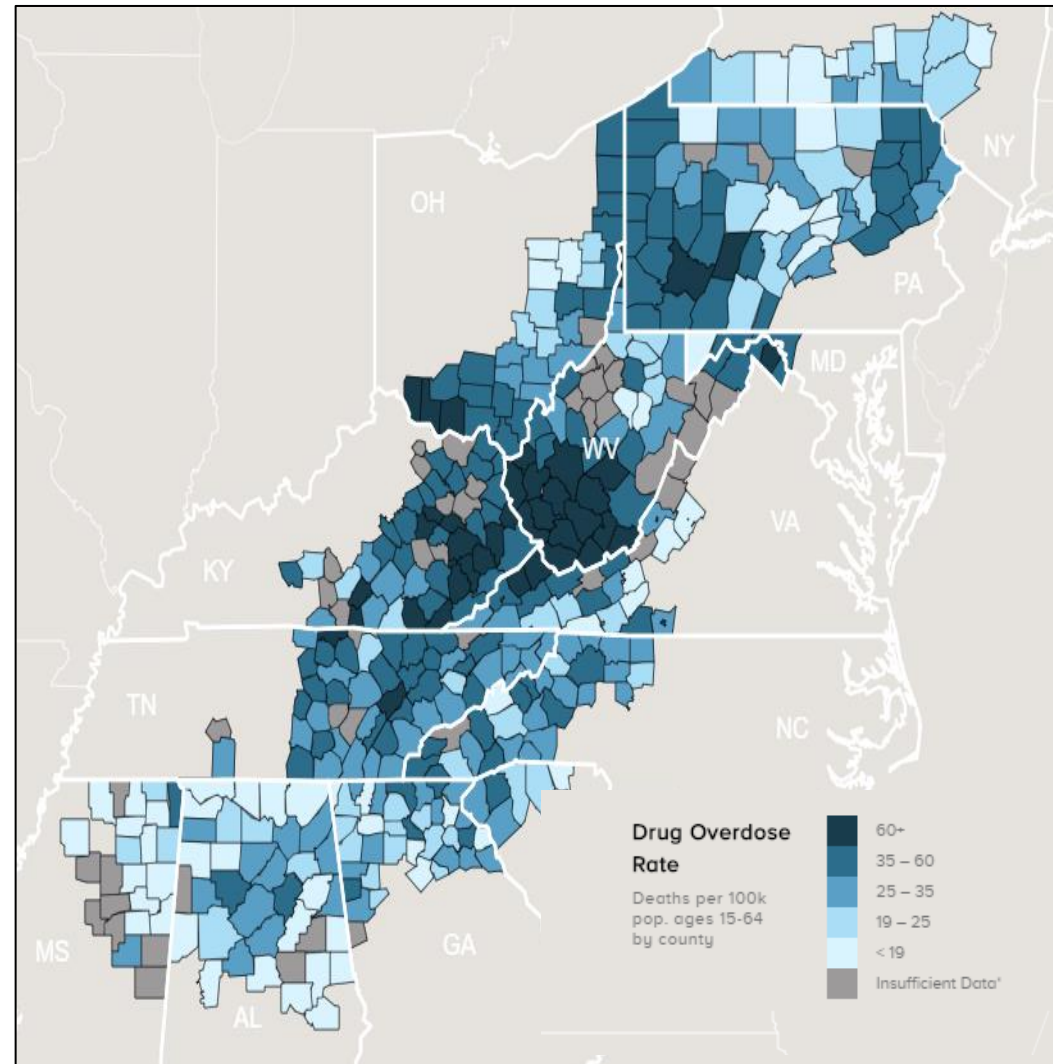
Appalachian Leadership Institute



Appalachian Leadership Institute



Substance use disorder in Appalachia



Substance use disorder in Appalachia

Drug overdose mortality rates

(Deaths per 100,000 population,
2014-2018)

- 65.5** Allegany County Drug Overdose Mortality Rate (Ages 15-64)
- 42.4** Maryland Drug Overdose Mortality Rate
- 41.2** Appalachian Region Drug Overdose Mortality Rate
- 27.1** U.S. Drug Overdose Mortality Rate



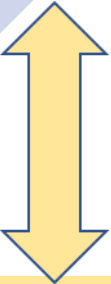
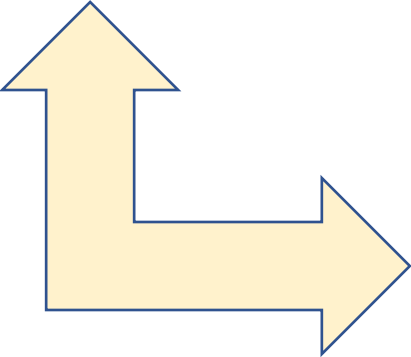
The Recovery Ecosystem

Substance Abuse Treatment

Workforce Training

Employment

Recovery Support Services



INSPIRE Announcement

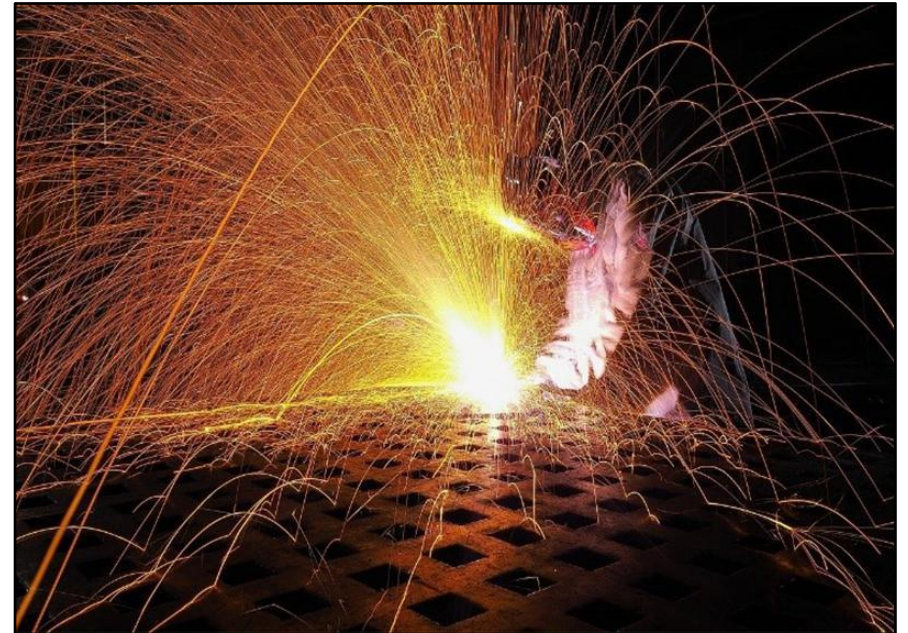
INvestments Supporting Partnerships in Recovery Ecosystems

- **\$10 million program**
- **Implementation grants up to \$500,000**
- **Planning grants up to \$50,000**
- **Letter of intent due October 16**
- **Application due November 13**
- **Must contact state ARC office**
- **www.arc.gov/SUD**



DOE/NETL High-Tech Welding Program

- **Jointly funded with ARC**
- **Focused on superalloy components**
- **Workforce training to help fossil fuel power plants, automotive, and aerospace sectors**
- **RFP expected this fall**



COVID Response



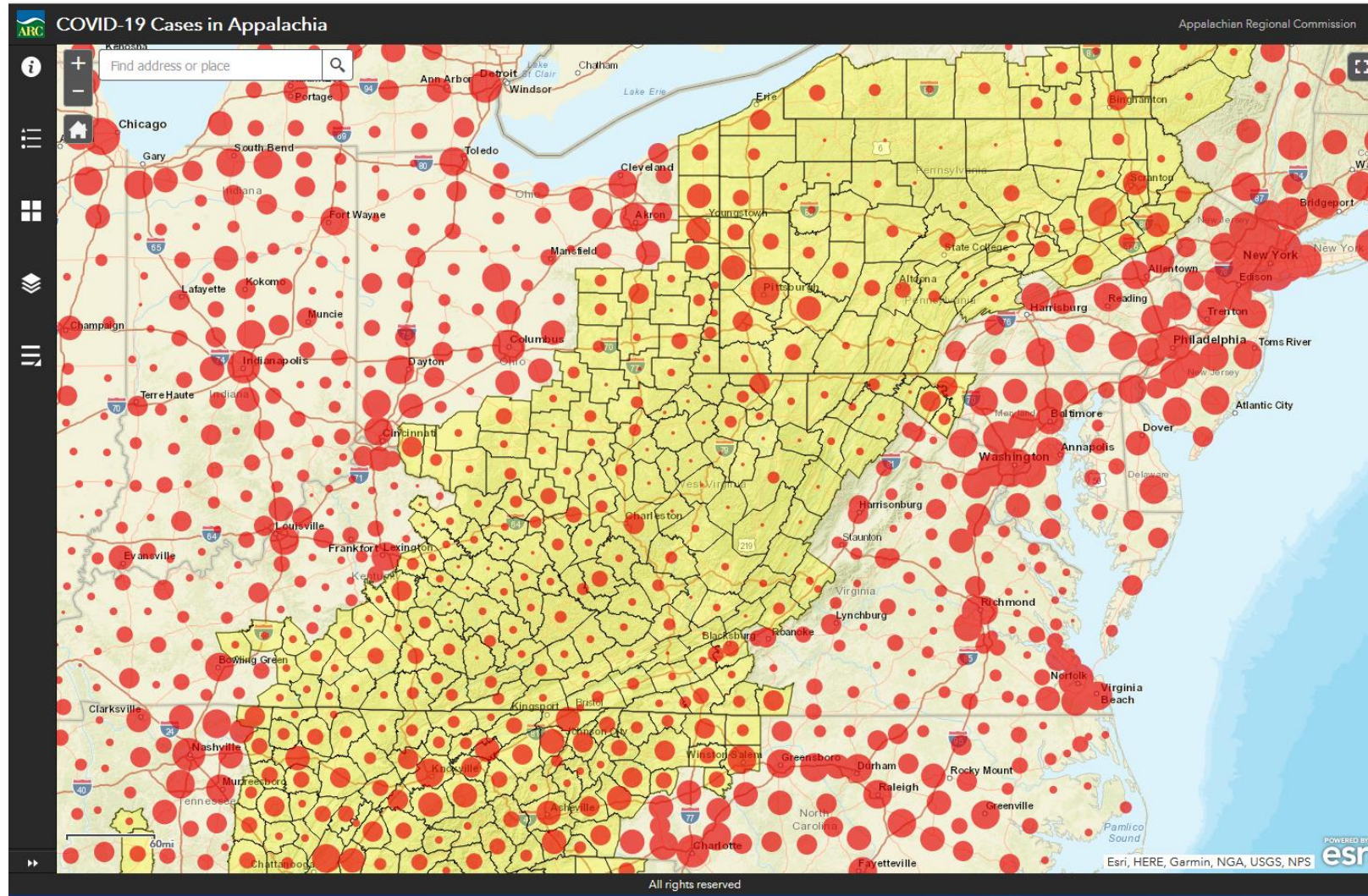
ECONOMIC INNOVATION + INGENUITY DURING COVID

Lessons Learned in Leadership During the COVID Crisis

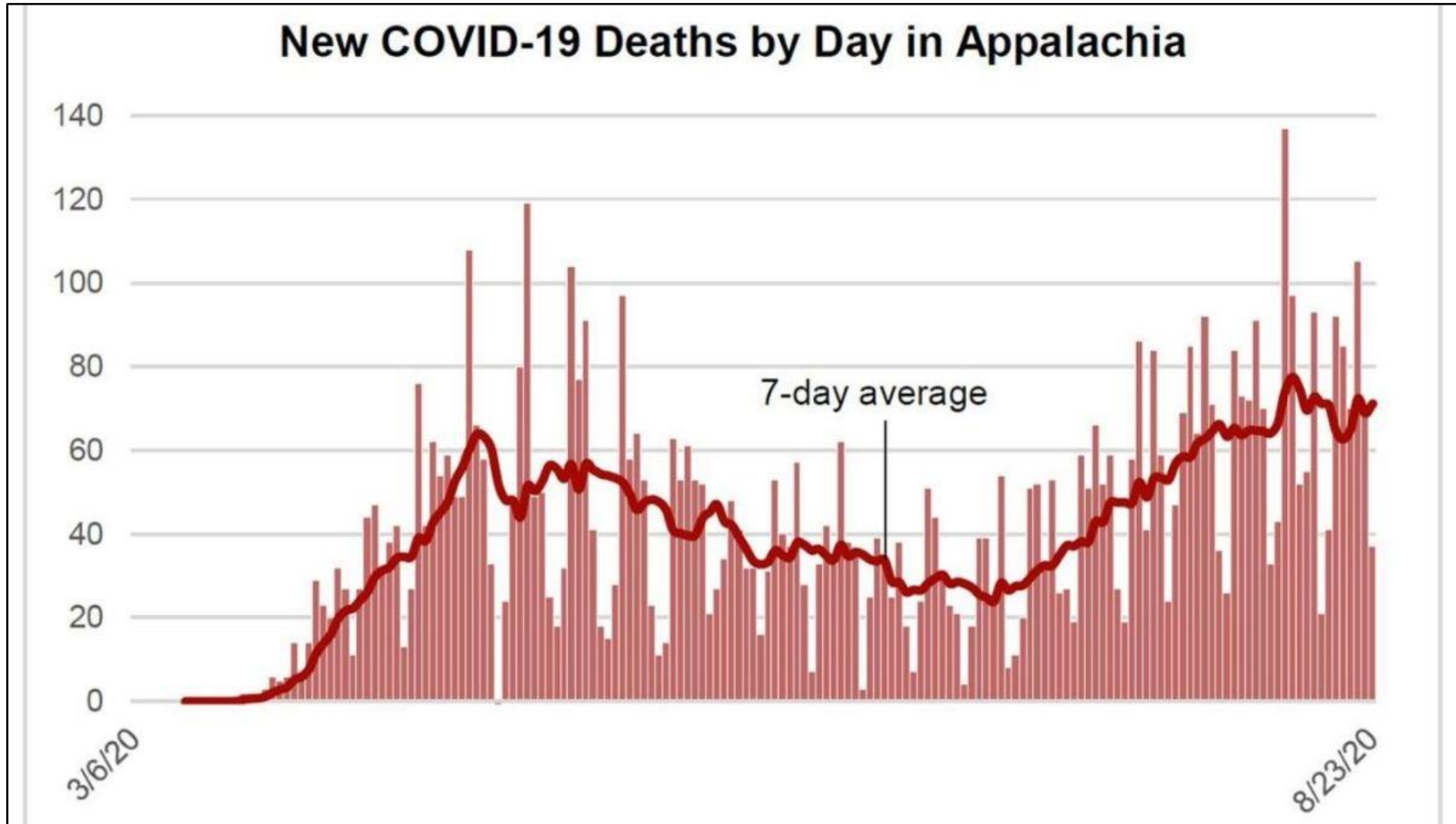
| | | | |
|--|--|--|---|
|  <p>MODERATOR: Lydia Mihalik Director, Ohio Development Services Agency</p> |  <p>ARC Federal Co-Chairman Tim Thomas</p> |  <p>Governor Mike DeWine State of Ohio</p> |  <p>Tiffany Swigert Executive Director Coshocton Port Authority</p> |
|--|--|--|---|



COVID Response



COVID Response



COVID Response

- **ARC operations – nimble and efficient**
- **Programmatic support to the region's small businesses**
 - ❖ **Redeployed recovered POWER funds**
 - ❖ **Restructured outstanding grants**
 - ❖ **States used ARC money to recapitalize Revolving Loan Funds**



COVID Response

- Supported regional companies making PPE



Ohio



North Carolina

COVID Response

- Shifted our youth programs (ORNL and Appalachian Entrepreneurship Academy) to a virtual format



- Leveraged the region's leadership strengths through the Appalachian Leadership Institute

COVID Response



Technical Assistance to Appalachian Nonprofits

Key Elements

- **Small cohorts**
- **5-week or 10-week courses**
- **Mentoring**
- **Sharing best practices**

COVID Response

Technical Assistance to Appalachian Nonprofits

Training Topics

- 1) Short-term financial management to stabilize the organization**
- 2) Long-term financial management to maintain solvency**
- 3) Adapting operations and mission to respond to COVID**
- 4) Adjusting fundraising strategies to reflect changed income sources and integrate social media**



COVID Response

Technical Assistance to Appalachian Nonprofits

What's Next

- **RFP slated for later this month**
- **3-week application period**
- **Courses begin in October/November**



Preparing for a Bright Future

- ✓ Capitalizing on **assets**—physical, social, economic, human
- ✓ Building vibrant **partnerships**—local and regional
- ✓ Crafting a transformational **vision**
- ✓ Creating a message of **hope and resilience**



Times-News file photo



APPALACHIAN REGIONAL COMMISSION

The Greater Cumberland Committee

September 3, 2020